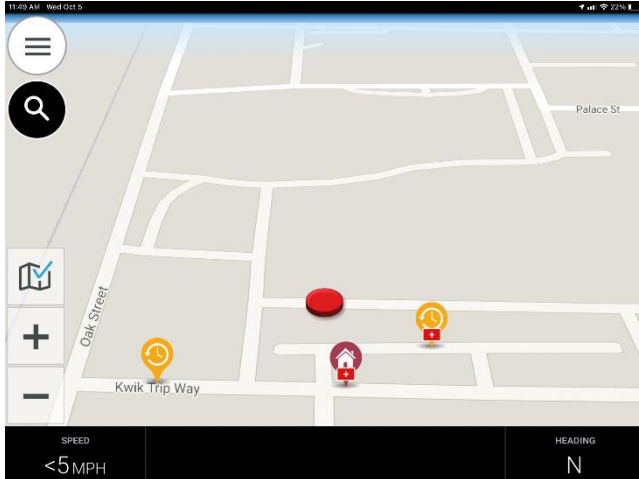


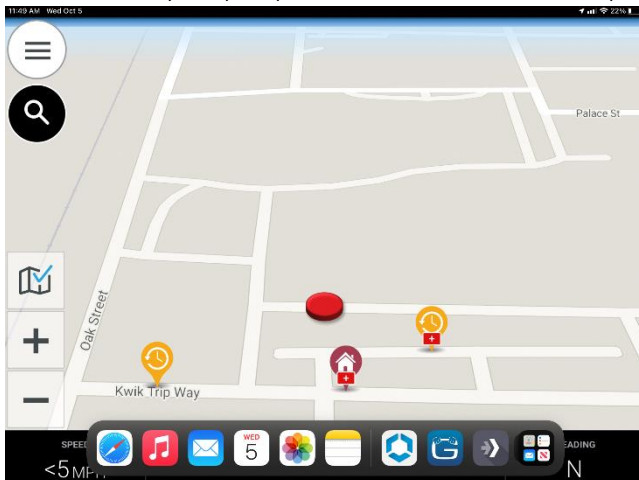
Split screen with CoPilot/GeoTab

NOTE Initial set up of the screen split must be done while vehicle is **parked**.

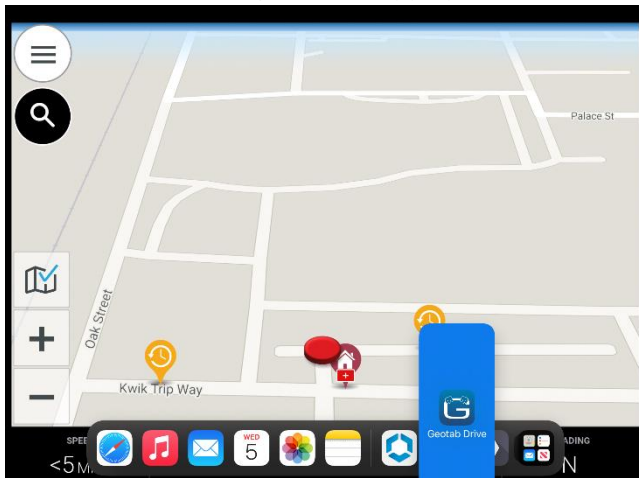
1. Open CoPilot App on iPad



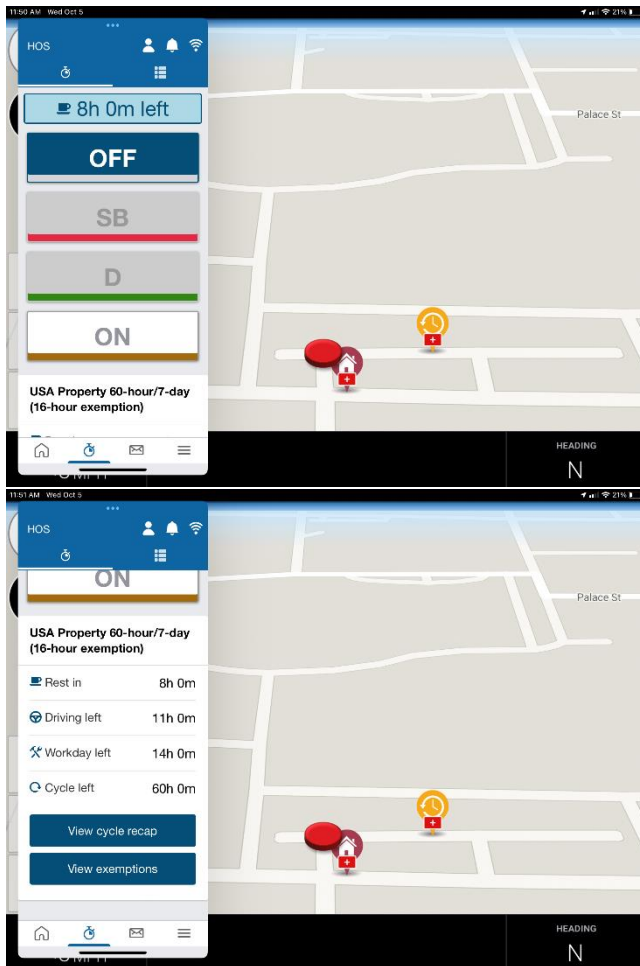
2. Gently swipe up from middle bottom to display quick navigation bar



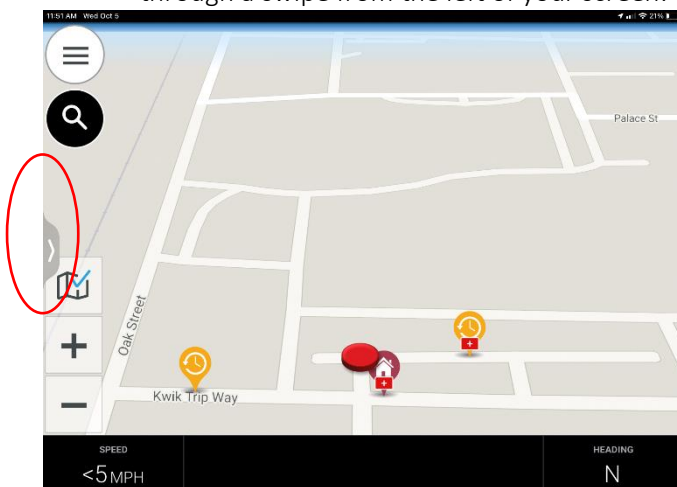
3. Hold and drag GEOTAB app up onto screen, it will show as a blue rectangle.



4. You will then see the option to click on HOS – and view your current status. Scroll down to see time left:



5. Swipe the GeoTab app to the left and it will then move out of sight but be quickly accessible through a swipe from the left of your screen.



Last Update: 10/5/22